

# SPEC SHEET + MEASUREMENTS



## Eddie Bauer® Quilted Jacket. EB510

### Product photo



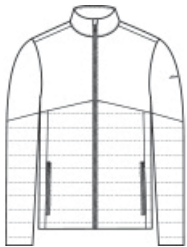
Minimal bulk meets maximized performance in this quilted jacket that is built for your cold-weather adventures.

- 100% polyester shell and lining
- 5-ounce, 100% polyester fill
- Durable water-repellent (DWR) finish
- Exposed, molded zippers with Eddie Bauer logo pulls
- Zippered hand pockets
- Elastic at cuffs
- Adjustable locking drawcord hem
- Contrast heat transfer Eddie Bauer logo on left sleeve

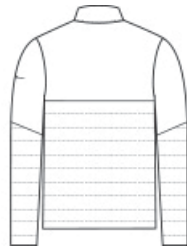
### CARE INSTRUCTIONS

Machine Wash Cold With Like Colors. Do Not Use Fabric Softener. Do Not Bleach. Tumble Dry Low. Cool Iron. Do Not Dry Clean.

### Sketches



front



back

# SPEC SHEET + MEASUREMENTS



Eddie Bauer® Quilted Jacket. EB510

## PRODUCT MEASUREMENTS

	XS	S	M	L	XL	2XL	3XL	4XL
Body Length at Back	27	28	29	30	31	32	32 1/2	33
Chest	19 1/2	21	22 1/2	24	25 1/2	27	29	31
Sleeve Length from Center Back	34 3/4	35 1/2	36 1/4	37	37 3/4	38 1/2	39 1/4	40

**Body Length at Back:** Measured from high point shoulder to finished hem at back.

**Chest:** Measured across the chest one inch below armhole when laid flat.

**Sleeve Length from Center Back:** Measure from Center Back neck to shoulder point to sleeve hem.

## SIZE CHARTS

	XS	S	M	L	XL	2XL	3XL	4XL
Chest	32-34	35-37	38-40	41-43	44-46	48-50	52-54	55-57

# SPEC SHEET + MEASUREMENTS



Eddie Bauer® Quilted Jacket. EB510

## HOW TO MEASURE

---



### CHEST

Measure under the arm and around the fullest part of the chest with arms down, keeping tape horizontal.

## COLORS

---



Cobalt Blue  
PMS 654C



Deep Black  
PMS BLACK  
C



Iron Gate  
PMS 7540C



River Blue  
Navy  
PMS 533C